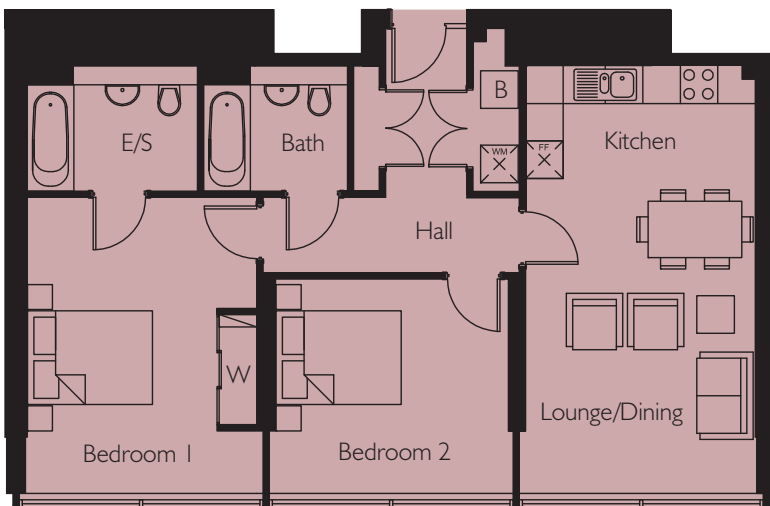


# Apartment 89

Weststand Apartments



FIFTH FLOOR



Kitchen/Lounge /Dining	6835mm x 3800mm	22'5" x 12'5"
Bedroom 1	4735mm* x 3800mm	15'6"* x 12'5"
Bedroom 2	3900mm x 3429mm	12'9" x 11'3"
Area	80.8 m <sup>2</sup>	869.7 sq.ft
*(max)		

Energy Efficiency Rating		
	Current	Potential
Very energy efficient - lower running costs		
(92-plus) <b>A</b>		
(81-91) <b>B</b>	83	85
(69-80) <b>C</b>		
(55-68) <b>D</b>		
(39-54) <b>E</b>		
(21-38) <b>F</b>		
(1-20) <b>G</b>		
Not energy efficient - higher running costs		
<b>England &amp; Wales</b>	EU Directive 2002/91/EC	

Environmental Impact (CO <sub>2</sub> ) Rating		
	Current	Potential
Very environmentally friendly - lower CO <sub>2</sub> emissions		
(92-plus) <b>A</b>		
(81-91) <b>B</b>		
(69-80) <b>C</b>	80	81
(55-68) <b>D</b>		
(39-54) <b>E</b>		
(21-38) <b>F</b>		
(1-20) <b>G</b>		
Not environmentally friendly - higher CO <sub>2</sub> emissions		
<b>England &amp; Wales</b>	EU Directive 2002/91/EC	