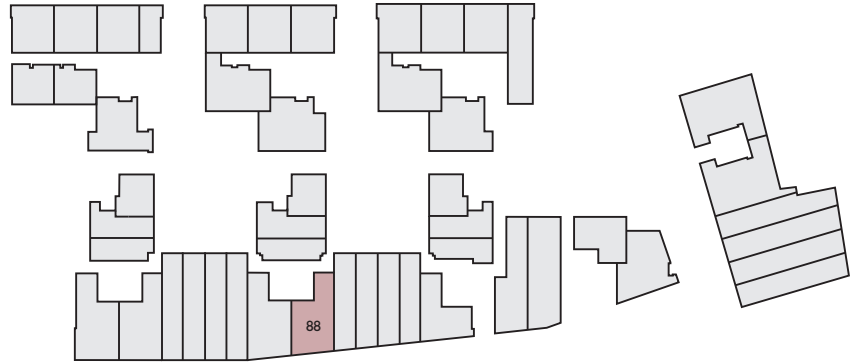
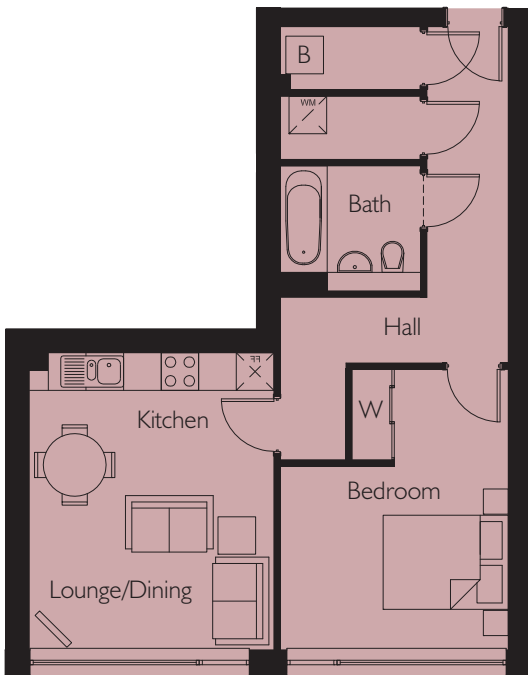


# Apartment 88

## Northstand Apartments



LOWER GROUND FLOOR



Lounge/Dining /Kitchen	4745mm x 3907mm	15'6" x 12'9"
Bedroom	4480mm x 3643mm	14'8" x 11'11"
Area	55.1 m <sup>2</sup>	593 sq.ft

Energy Efficiency Rating		
	Current	Potential
Very energy efficient - lower running costs		
(92-plus) <b>A</b>		
(81-91) <b>B</b>	<b>84</b>	<b>85</b>
(69-80) <b>C</b>		
(56-68) <b>D</b>		
(39-54) <b>E</b>		
(21-38) <b>F</b>		
(1-20) <b>G</b>		
Not energy efficient - higher running costs		
<b>England &amp; Wales</b>	EU Directive 2002/91/EC	

Environmental Impact (CO <sub>2</sub> ) Rating		
	Current	Potential
Very environmentally friendly - lower CO <sub>2</sub> emissions		
(92-plus) <b>A</b>		
(81-91) <b>B</b>	<b>85</b>	<b>86</b>
(69-80) <b>C</b>		
(56-68) <b>D</b>		
(39-54) <b>E</b>		
(21-38) <b>F</b>		
(1-20) <b>G</b>		
Not environmentally friendly - higher CO <sub>2</sub> emissions		
<b>England &amp; Wales</b>	EU Directive 2002/91/EC	