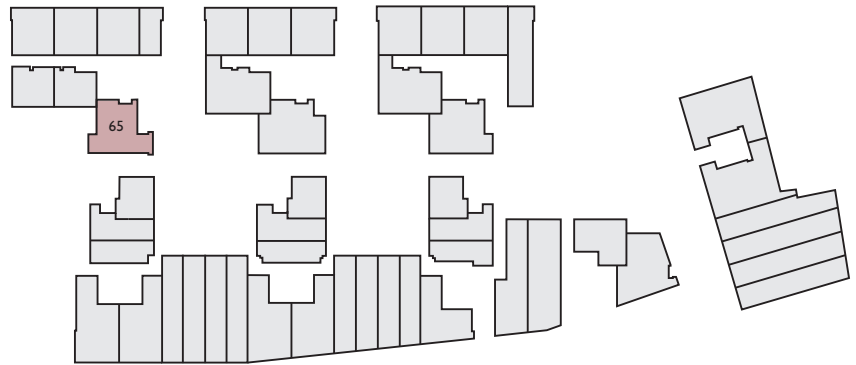
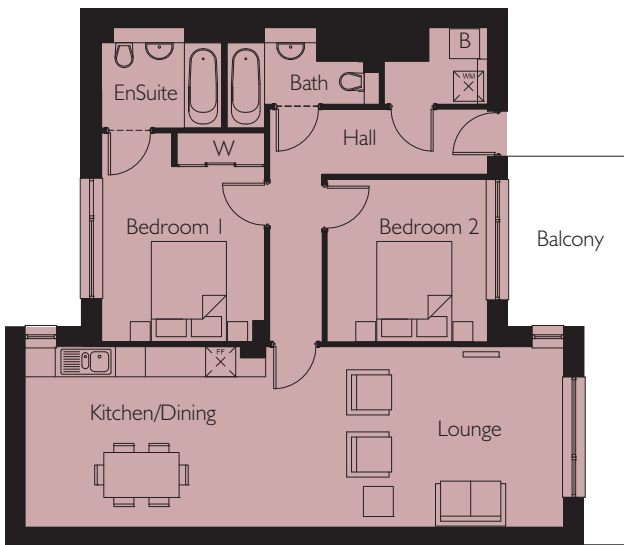


Apartment 65

Northstand Apartments



LOWER GROUND FLOOR



Kitchen/Lounge /Dining	10750mm x 3600mm	35'3" x 11'9"
Bedroom 1	4165mm* x 3252mm*	13'8"* x 10'8"*
Bedroom 2	3240mm x 3198mm	10'6" x 10'6"
Area	86.3 m ²	928.9 sq.ft

*(max)

Energy Efficiency Rating		
	Current	Potential
Very energy efficient - lower running costs		
(92-plus) A		
(81-91) B	82	83
(69-80) C		
(55-68) D		
(39-64) E		
(21-38) F		
(1-20) G		
Not energy efficient - higher running costs		
England & Wales	EU Directive 2002/91/EC	

Environmental Impact (CO ₂) Rating		
	Current	Potential
Very environmentally friendly - lower CO ₂ emissions		
(92-plus) A		
(81-91) B	83	84
(69-80) C		
(55-68) D		
(39-64) E		
(21-38) F		
(1-20) G		
Not environmentally friendly - higher CO ₂ emissions		
England & Wales	EU Directive 2002/91/EC	