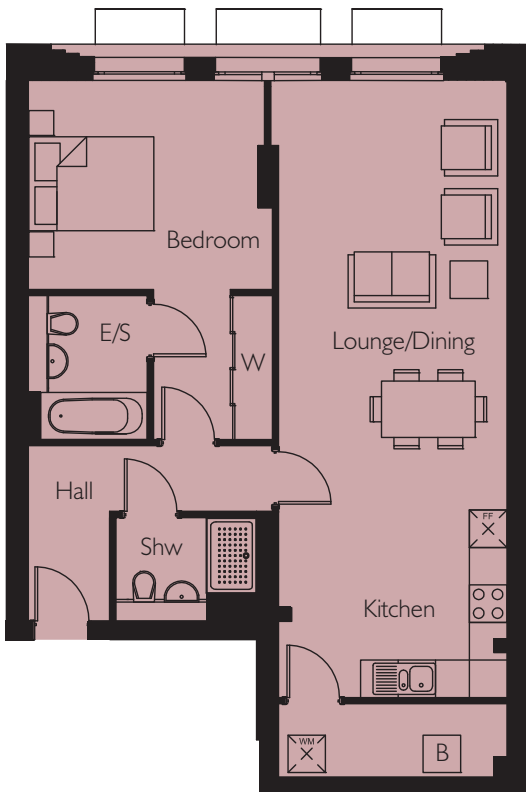


Apartment 49

Weststand Apartments



FOURTH FLOOR



Lounge/Dining	6771mm x 3745mm*	22'3" x 12'3"*
Kitchen	3620mm x 3000mm	11'11" x 9'10"
Bedroom	5643mm* x 3775mm	18'6"* x 12'4"
Area	73.8 m2	794.3 sq.ft

*(max)

Energy Efficiency Rating		
	Current	Potential
Very energy efficient - lower running costs		
(92-plus) A		
(81-91) B	85	87
(69-80) C		
(56-68) D		
(39-54) E		
(21-38) F		
(1-20) G		
Not energy efficient - higher running costs		
England & Wales	EU Directive 2002/91/EC	

Environmental Impact (CO ₂) Rating		
	Current	Potential
Very environmentally friendly - lower CO ₂ emissions		
(92-plus) A		
(81-91) B	87	88
(69-80) C		
(56-68) D		
(39-54) E		
(21-38) F		
(1-20) G		
Not environmentally friendly - higher CO ₂ emissions		
England & Wales	EU Directive 2002/91/EC	