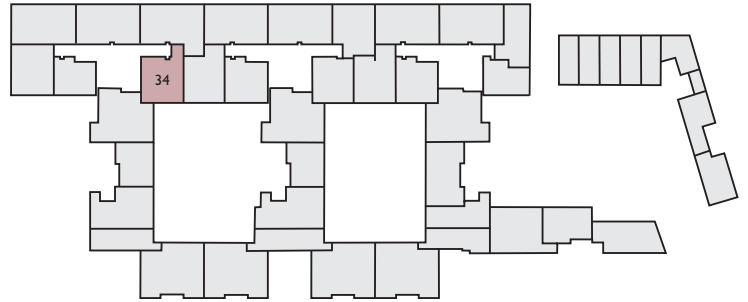
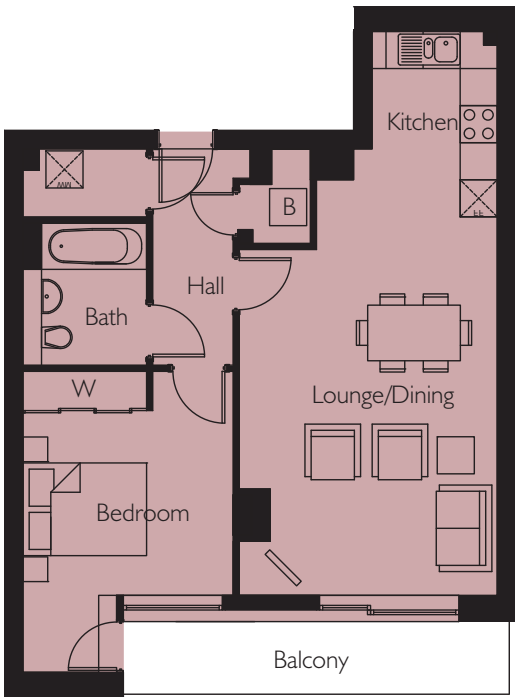


Apartment 34

Northstand Apartments



FIRST FLOOR



Lounge/Dining	6125mm x 4120mm	20'1" x 13'6"
Kitchen	3000mm*x 2925mm*	9'10"* x 9'7"*
Bedroom	4870mm*x 3400mm	15'11"* x 11'1"
Area	60.1 m2	646.9 sq.ft
*(max)		

Energy Efficiency Rating		
	Current	Potential
<i>Very energy efficient - lower running costs</i>		
(92-plus) A		
(81-91) B	87	88
(69-80) C		
(56-68) D		
(39-54) E		
(21-38) F		
(1-20) G		
<i>Not energy efficient - higher running costs</i>		
England & Wales		EU Directive 2002/91/EC

Environmental Impact (CO ₂) Rating		
	Current	Potential
<i>Very environmentally friendly - lower CO₂ emissions</i>		
(92-plus) A		
(81-91) B	88	89
(69-80) C		
(56-68) D		
(39-54) E		
(21-38) F		
(1-20) G		
<i>Not environmentally friendly - higher CO₂ emissions</i>		
England & Wales		EU Directive 2002/91/EC